

P.I.P.

COMUNE DI SAVOGNA D'ISONZO (GORIZIA)

piano insediamenti produttivi

Legge n° 865/1971

DATA ~~01/01/2007~~

TITOLO
LOCALIZZAZIONE P.I.P:
STRALCIO P.R.G.C. VIGENTE
(ELAB.C1n - C2a/b)

SCALA 1: 5.000 -1:2.000

1

ELABORATO

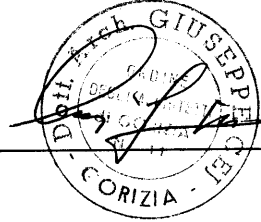
IL SINDACO

IL SEGRETARIO

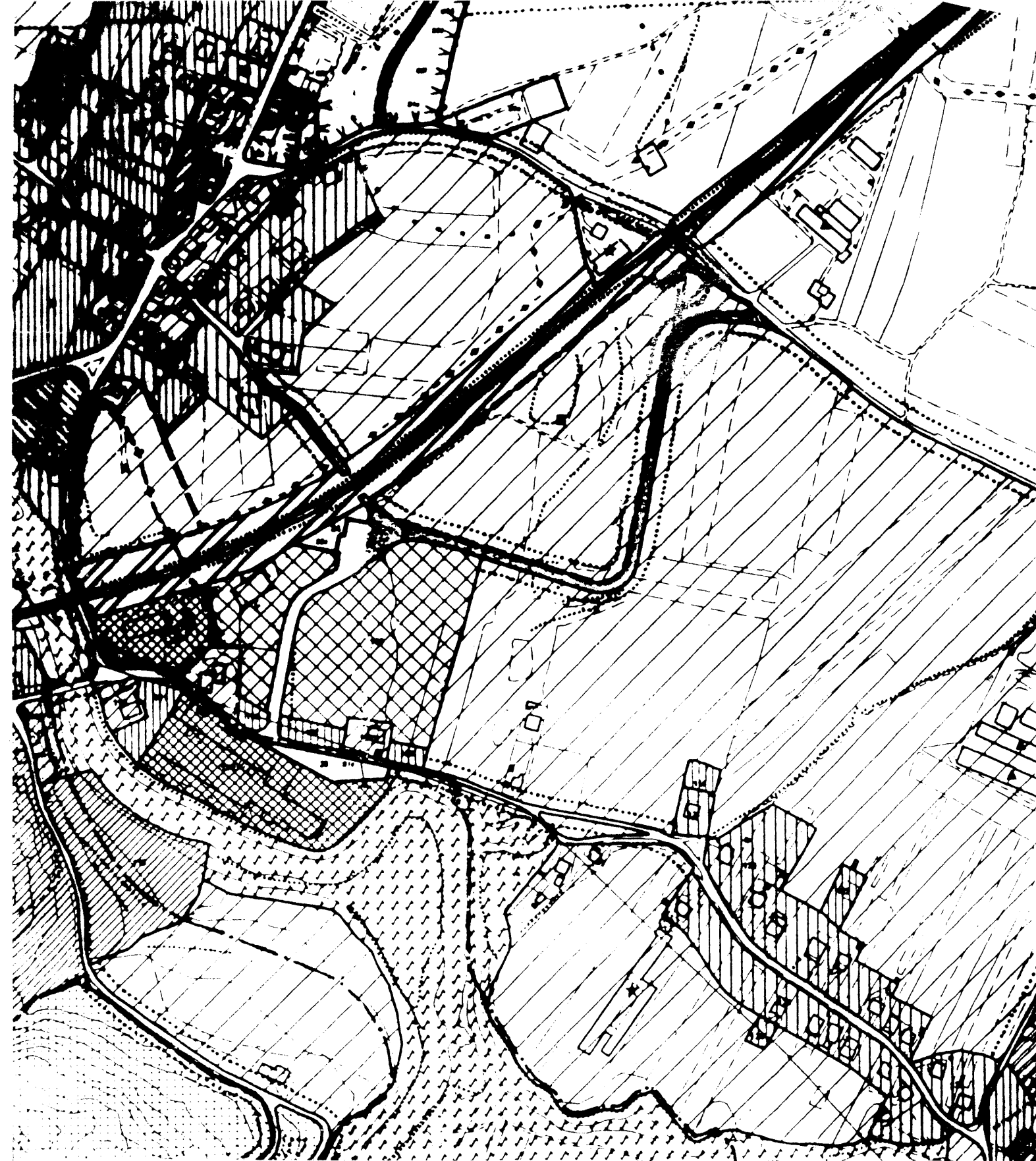
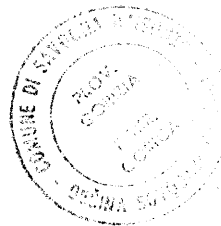
I PROGETTISTI:

dott. arch. LUISA CODELLIA

dott. arch. GIUSEPPE CEJ



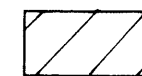
IL RESPONSABILE DEL
CODICIFORMI
Mitja Lovcic



ESTRATTO ELAB. C1n

P.R.G.C. VIGENTE

scala 1: 5.000



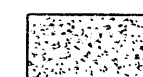
ZONA E4



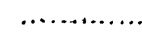
ZONA B4



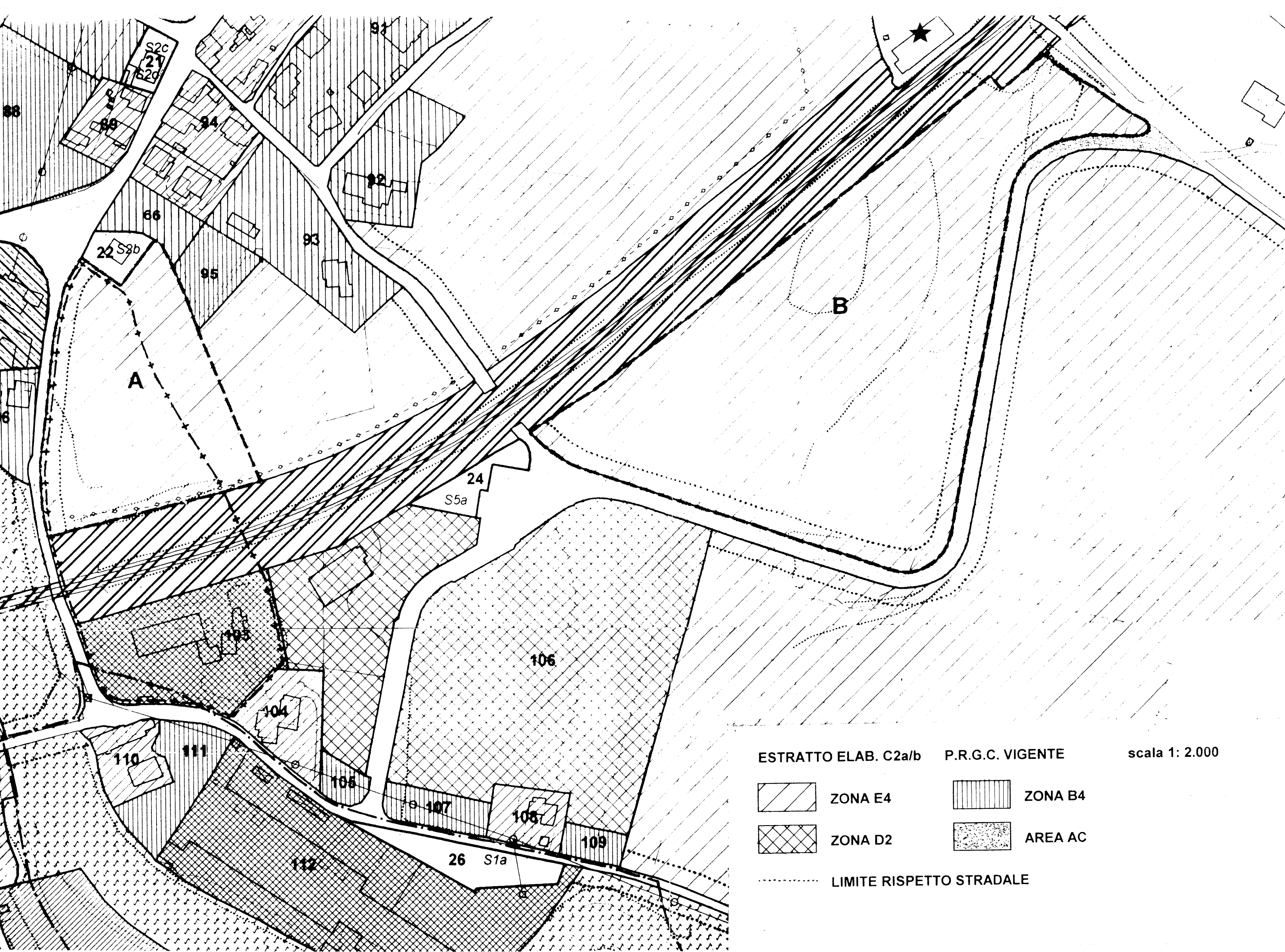
ZONA D2



AREA AC



LIMITE RISPETTO STRADALE



ESTRATTO ELAB. C2a/b

P.R.G.C. VIGENTE

scala 1: 2.000



ZONA E4



ZONA B4



ZONA D2



AREA AC

----- LIMITE RISPETTO STRADALE